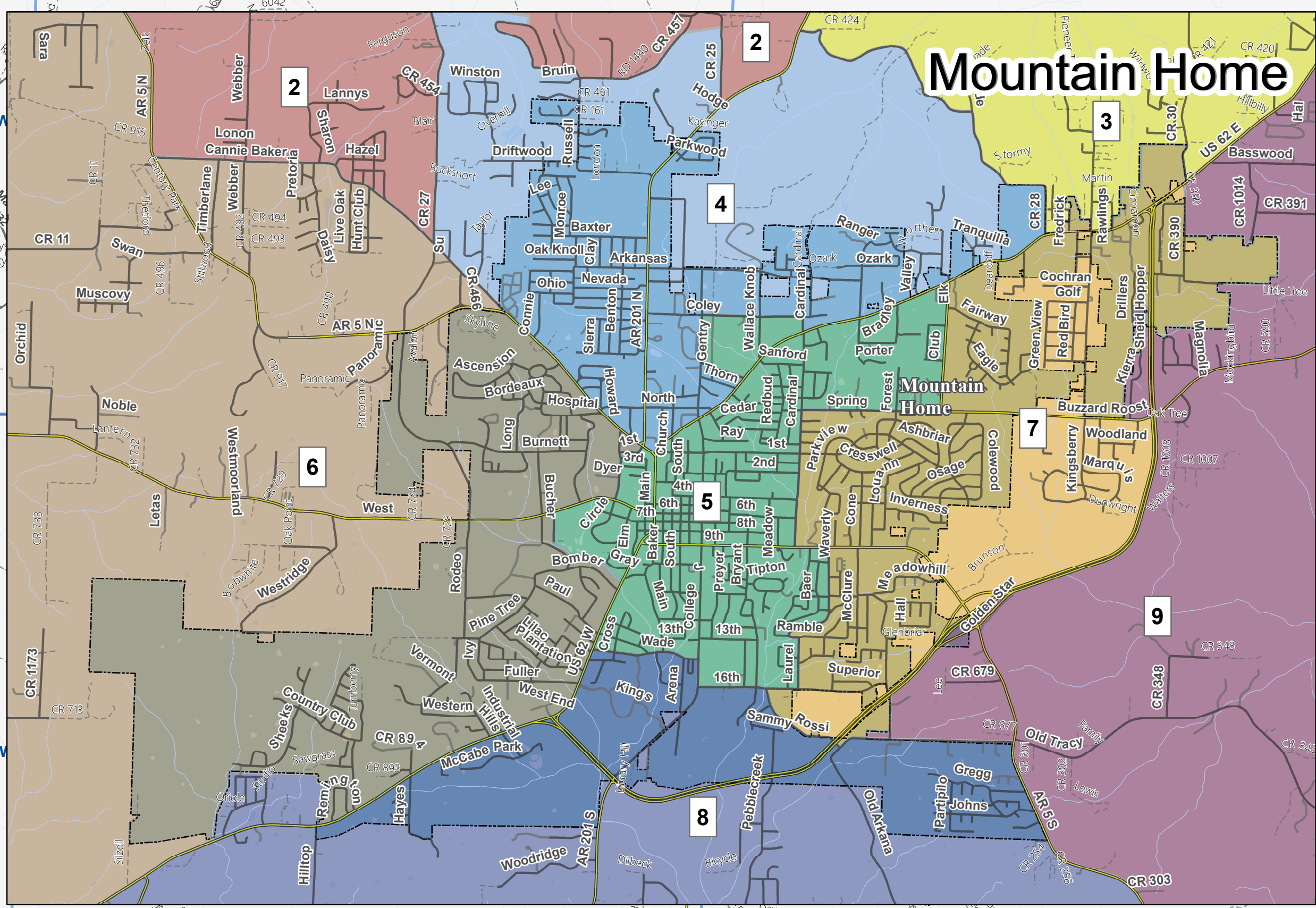
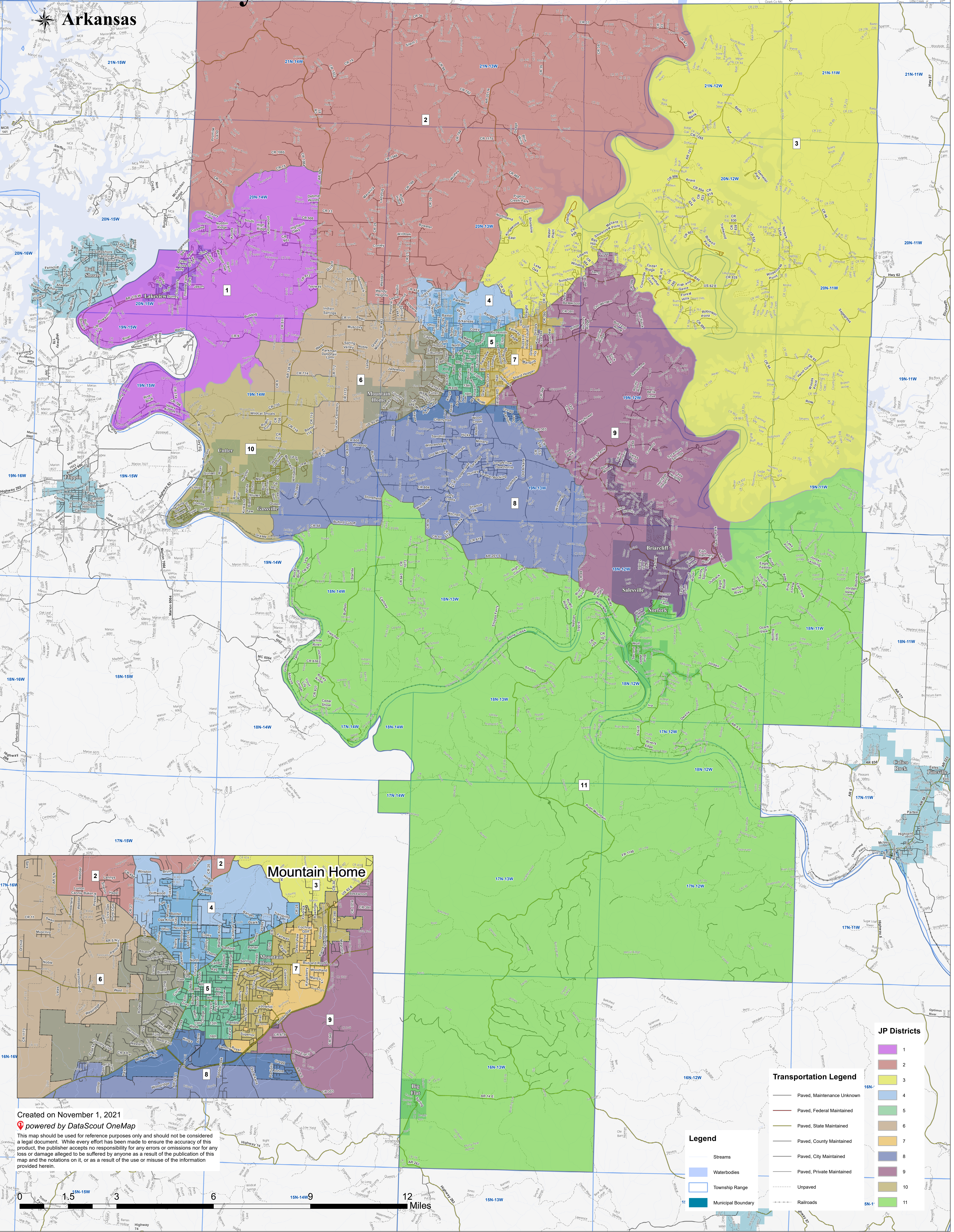


Baxter County

Arkansas



JP Districts

1	2	3	4	5	6	7	8	9	10	11
---	---	---	---	---	---	---	---	---	----	----

Transportation Legend

—	Paved, Maintenance Unknown
—	Paved, Federal Maintained
—	Paved, State Maintained
—	Paved, County Maintained
—	Paved, City Maintained
—	Paved, Private Maintained
—	Unpaved
—	Railroads

Legend

—	Streams
—	Waterbodies
—	Township Range
—	Municipal Boundary

Created on November 1, 2021
 powered by DataScout OneMap
 This map should be used for reference purposes only and should not be considered a legal document. While every effort has been made to ensure the accuracy of this product, the publisher accepts no responsibility for any errors or omissions nor for any loss or damage alleged to be suffered by anyone as a result of the publication of this map and the notations on it, or as a result of the use or misuse of the information provided herein.

